



TK International  
020 7794 8700  
www.t-k.co.uk

Residential Sales  
Residential Lettings  
Property Management

Sales Office:  
9 Heath Street  
Hampstead  
London NW3 6TP  
E: sales@t-k.co.uk

Lettings Office:  
16-18 Heath Street  
Hampstead  
London NW3 6TE  
E: lettings@t-k.co.uk

tk.international  
TK International  
TK International

Est.  
1998



## Oak Hill Park Hampstead NW3

Positioned on the prestigious and discreet Oak Hill Park Estate, a private residential address renowned for its exclusivity and tranquillity, this exceptional penthouse occupies an entire floor, offering an impressive sense of space, privacy, and refinement.

The property itself has been designed with both comfort and elegance in mind, featuring four beautifully proportioned bedrooms and four luxurious bathrooms. Expansive glazing throughout floods the interiors with natural light, while the open-plan living spaces create a seamless flow perfect for entertaining or relaxed family living. From its elevated position, the penthouse captures far-reaching views across London, providing a stunning and ever-changing backdrop.

Located just moments from the charm of Hampstead Village, residents can enjoy an effortless connection to a vibrant mix of boutique shops, acclaimed cafés, and everyday amenities. Despite its peaceful setting, excellent transport links are within easy reach, with Hampstead Underground Station just a short distance away, offering convenient access into the city via the Northern line.

Residents of Oak Hill Park benefit from an exceptional array of on-site amenities that elevate everyday living. The development offers porterage, off-street parking, beautifully maintained communal gardens, and private tennis courts, creating a rare blend of convenience, leisure, and exclusivity within one of Hampstead's most sought-after settings.

**£3,350,000**

**Share of Freehold**



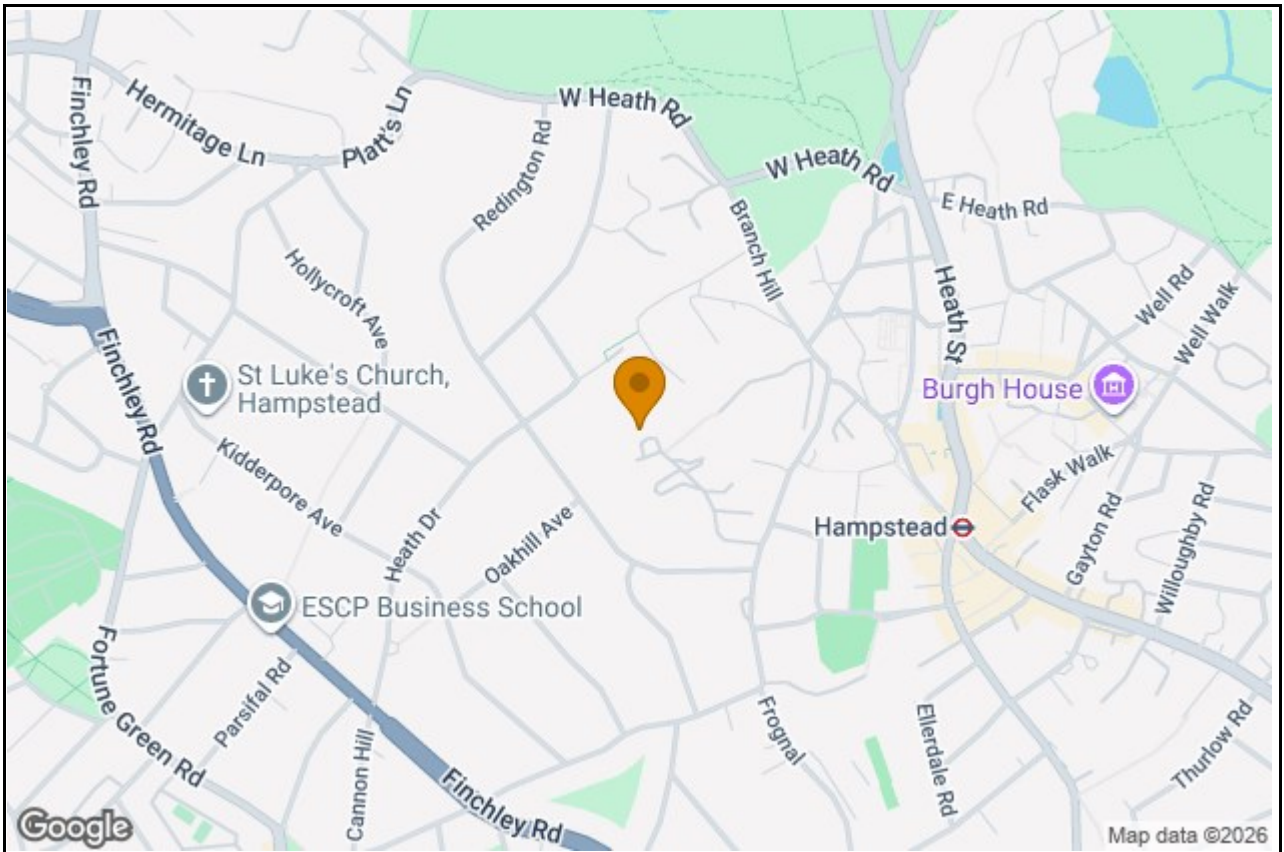








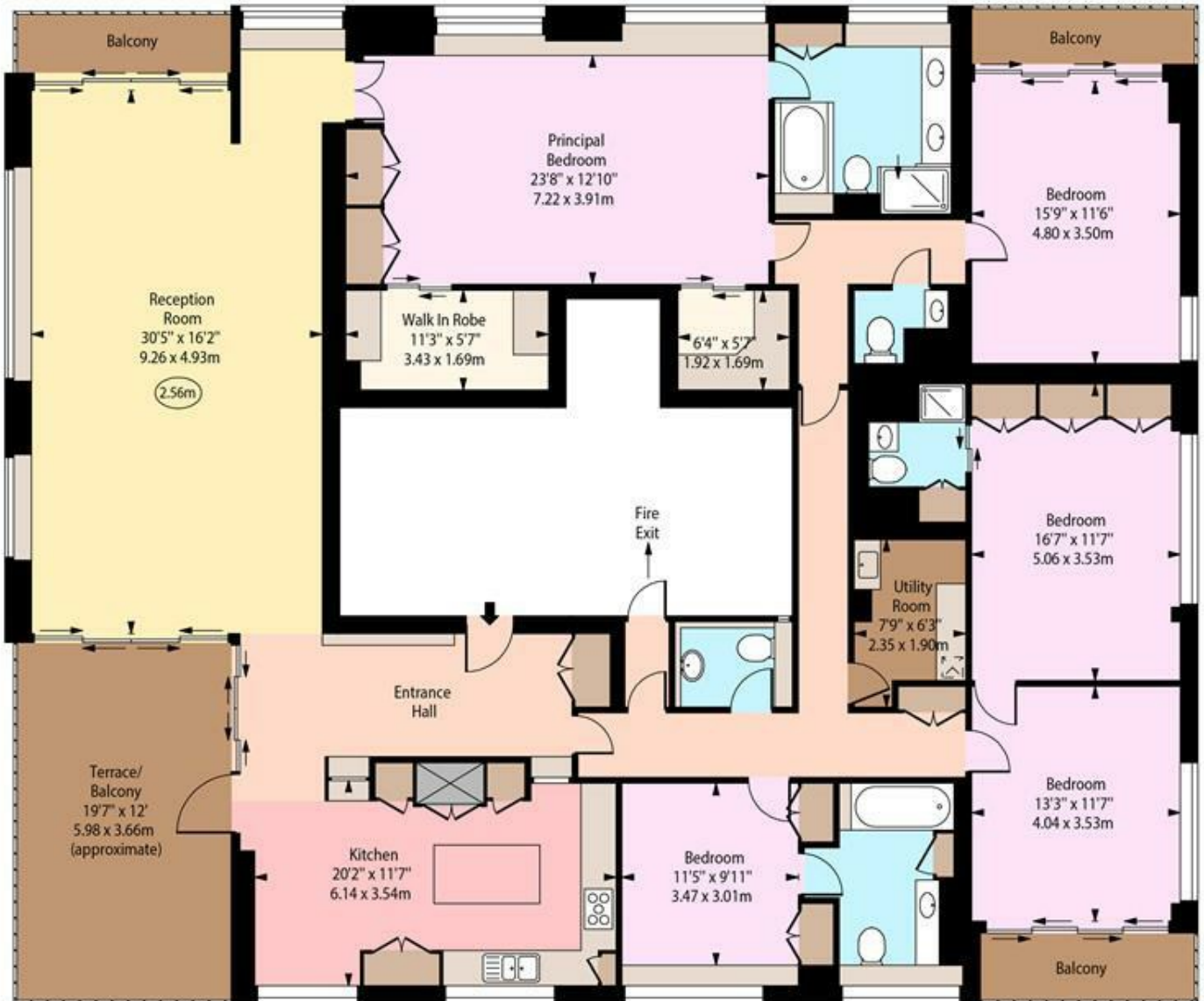




Oak Hill Lodge,  
Oak Hill Park, NW3



○ - Ceiling Height



Sixth Floor

Approx Gross Internal Area 2600 Sq Ft - 241.54 Sq M

Every attempt has been made to ensure the accuracy of the floor plan shown. However, all measurements, fixtures, fittings, and data shown are approximate interpretations and for illustrative purposes only. Measured according to the RICS. Not To Scale.

[www.goldlens.co.uk](http://www.goldlens.co.uk)

Prepared for TK International

Ref. No. 031444D